



Disney Cruise Vacations





Wonders All Around



WELCOME ABOARD *DISNEY CRUISE LINE*

The enchantment begins the moment you arrive. You're swept up into a fantastical world of Disney Service, world-class entertainment and unforgettable dining.

Here, adults find excitement and indulgence. Kids, tweens and teens discover amazing clubs and endless adventures. And together, you create memories that will last a lifetime.



Itineraries and sail dates are subject to change. Port order may vary.



IT'S ALL HERE. AND IT'S ALL INCLUDED.

ENCHANTING EXTRAS FOR EVERY MEMBER OF YOUR CREW

On Disney Cruises, it's all those little extras that add up to the most magical vacation of your life--- and it's all included.

Enjoy everything from **Broadway-style musicals**, first-run films, special moments with Disney Characters and **themed deck parties** for the whole family--most voyages even include fireworks.

If you're looking for a luxurious space tailored to your family's style and preferences, discover some of the most **spacious staterooms** at sea aboard *Disney Cruise Line*.

Most Caribbean and Bahamian sailings stop at **our private island paradise Disney Castaway Cay**. With unique areas for every member of the family, everyone will find the relaxation they're looking for.

On board, you'll discover **amazing kids' clubs** where kids can play from sunup until long after sundown with care provided by specially trained Disney counselors. And there are immersive spaces and activities for tweens and teens.

Throughout your cruise, you'll experience a **variety of restaurants** for every taste. Not to mention **24-hour complimentary room service** and all the soda, coffee and tea you could want up on deck.

THERE'S EVEN MORE INCLUDED:

- Enjoy delicious BBQ lunch on Disney *Castaway Cay*, our private island paradise
- Watch feature films from the comfort of your stateroom
- Indulge in delicious Quick-Service meals--day and night
- Check out our state-of-the-art fitness center

© Copyright Disney. All rights reserved.

ADULT ACTIVITIES

Sure, *Disney Cruise Line* knows kids. But believe it or not, we also know a thing or two about taking care of adults. All of our voyages are brimming with special magic created just for you. You can relax in our luxurious spa. Or let loose in our uniquely themed lounges and clubs. Maybe unwind at the coffee bar or splash in the adult-only pool. Even our state-of-the-art fitness center comes with a sense of luxury and a world-class view.

And on Disney's *Castaway Cay* our private island paradise, you'll discover *Serenity Bay*, the adult-only beach that truly lives up to its name. Plus, you'll find magical adult *Port Adventures* on select itineraries.

EVEN MORE INDULGENCES:

- Sign up for fabulous beer, wine, martini and truffle tastings*
- Join one of our culinary demonstrations
- Enjoy pub games and trivia
- Attend hilarious variety shows

**Fee applies*



© Copyright Disney. All rights reserved.



A NIGHT OF ROMANCE

Do not miss **Palo**—the elegant, yet relaxed restaurant on every *Disney Cruise Line* ship. Dine on exquisite Northern Italian cuisine and savor a decadent cellar of wines from every corner of the world.

Aboard *Disney Dream* and *Disney Fantasy*, **Remy** offers an exceptional dining experience, featuring fine French flavors and a delightful design inspired by Disney•Pixar's *Ratatouille* film.

Both are reserved exclusively for Guests 18 and over, a special dress code and reservations are required, and a service fee is added per person.



Tweens and teens enjoy separate, private getaways--complete with big-screens, great music and lots of new friends. With the **Edge** club for tweens (11-14) and **Vibe** for teens (14-17), each *Disney Cruise Line* ship lets tweens and teens sail away with the coolest counselors at sea in spaces designed just for them. Just take a look at some of the fun that's in store!

EDGE

- **That's Hilarious**

Our counselors transform you into an improv comedian while you learn the basics of comedy games and improvisation skills mixed with a dash of fun. Now, that's hilarious!

- **Ghost Voyagers**

The ship is passing through mysterious waters where strange occurrences have happened in the past. Is it ghosts? Or just the imaginations of the people who witnessed them? Equipped with state-of-the-art ghost-hunting gear, it's up to the "Ghost Voyagers" to find out!

- **Pizza Perfection**

Answer trivia questions to win pizza toppings and create the perfect pizza. After the game is over, the pizzas are cooked and shared by all.

VIBE

- **Zombified**

They're putting the final touches on a big picture, *Zombified!* Pitch in by performing as a zombie in several scenes, even some of the speaking roles. Then the producer throws a Hollywood-style premiere party to celebrate!

- **Super Sloppy Science with Professor Make-O-Mess**

Now teens can partake in some of the sloppiest science experiments around, as the professor offers some hands-on training that will surely have them laughing and learning.

- **GOTCHA!**

How long will you last in this game of elimination? Join the teen counselors for the all-day event where your cunning skills are put to the test! Last teen standing, wins!

- **Chill Spa**

Disney Magic, *Disney Dream* and *Disney Fantasy* all feature *Chill Spa*, with relaxing treatments reserved just for teens.



© Copyright Disney. All rights reserved.



DISNEY'S OCEANEER CLUB AND DISNEY'S OCEANEER LAB

Kids 3-12 can let their imaginations sail free in *Disney's Oceaneer Club* and *Disney's Oceaneer Lab*, magical spaces designed just for them. And because these amazing kids' clubs have such fantastic hours, moms and dads can set off on their own adventures, knowing their youngsters are taken care of by specially trained Disney Youth Counselors. Plus, free onboard Wave Phones make sure that parents are just a phone call away.



© Copyright Disney. All rights reserved.

DREAM IT AND DO IT

Youth activities on your Disney cruise are designed to be as flexible as can be. So kids can really get immersed in their favorite things. Choose from a half-dozen activity tracks that appeal to different interests. Here are just a few incredible ways to play:

- **Star Wars™: Millenium Falcon** (*Disney Dream* only)
Join the Rebel Alliance aboard the Millennium Falcon where children enjoy interactive games, activities and even attend Jedi Training Academy.
- **Disney Infinity** (*Disney Dream* only)
This high-tech Disney Infinity interactive space lets kids play and unlock exclusive *Disney Cruise Line* in-game content.
- **MARVEL's Avengers Academy** (*Disney Magic* only)
Innovative technology allows children to unleash their inner superhero through a fun interactive adventure as they join the Avengers team.
- **So You Want to Be a Pirate**
The legendary Captain Hook himself teaches kids how to become a real pirate on the high seas.
- **Toy Story Boot Camp**
Join Corporal Green and the Green Army Men from the hit Disney•Pixar animated film series for a fun-filled tour of duty.



- **Bibbidi Bobbidi Boutique** (*Disney Fantasy, Disney Dream and Disney Magic*)
Here, princesses-to-be are greeted by their very own Fairy Godmother-in-training who transforms them with magical makeovers. And on special pirate party nights, the Boutique transforms into a swashbuckler's hideaway where everyone can get ready to live a pirate's life!



© Copyright Disney. All rights reserved.



LITTLE ONES

NURSERY

Each ship offers whimsical, soft play areas where children under 3 years old are watched over by Disney caregivers. There is an additional charge, and space is limited. So be sure to reserve your spot early at disneycruise.com.



© Copyright Disney. All rights reserved.

EXPLORE OUR EXCLUSIVE ONBOARD ENTERTAINMENT!

With more onboard entertainment than ever, *Disney Cruise Line* is bringing your family into the heart of imagination.

Your wildest dreams will come alive during dazzling on-stage and on-deck productions. In addition to some of your favorite deck parties and Broadway-style shows, this year we have all-new spectacular showcases featuring even more of our most popular films and characters.

Broadway-Style Shows

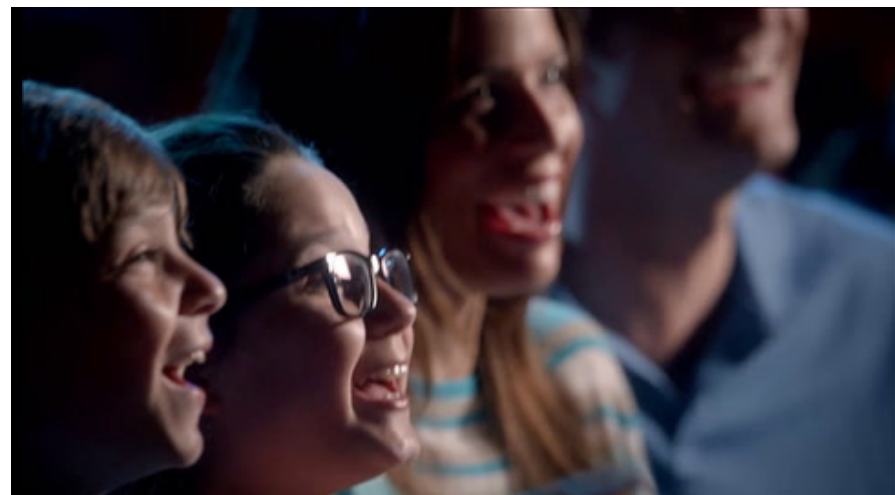
Enjoy exclusive *Disney Cruise Line* shows like the ever-popular *Aladdin*, our brand-new feature *Tangled: The Musical* and more.

Special Entertainment

Celebrate some of your favorite Disney Characters on one of our themed sailings! And for the first time in 2016, experience the all new *Star Wars Day at Sea* on eight select *Disney Fantasy* sailings.

Entertainment varies by ship and itinerary. Ask your Travel Agent for more details.





Deck Parties

With live events like the Pirates IN the Caribbean Deck Party and the Freezing the Night Away Deck Party (on select sailings), you'll enjoy a high seas celebration starring Characters like Captain Jack Sparrow, Anna, Elsa and more!

Entertainment varies by ship and itinerary. Ask your Travel Agent for more details.



CULINARY CREATIONS AND PURE IMAGINATION

Each night, you can savor a deliciously different menu at a different Disney venue. Indulge in expertly prepared dishes from filet mignon and lobster to culinary delights from around the world. Dining options range from upscale Table-Service and casual buffets to poolside dining, snacks and 24-hour room service. On board, there's always something delicious to satisfy everyone's taste!



© Copyright Disney. All rights reserved.

SAVOR A UNIQUE DISNEY DIFFERENCE: DINE IN A DIFFERENT RESTAURANT EACH NIGHT

Evenings of Elegance

Lumière's • Triton's • Royal Palace • Royal Court

Gracefully welcoming and located off the main lobby on each of our ships, these restaurants offer flavorful cuisine in a fairy tale setting.

Enchanting Entertainment

Animator's Palate

This *Disney Cruise Line* dining experience brings animated magic to every course, as memorable scenes from favorite films come to life with delightful flavors to complement the experience.

Carefree and Casual

Carioca's • Parrot Cay • Enchanted Garden

Carioca's (on *Disney Magic*) features scrumptious South American-inspired dishes and décor. *Parrot Cay* (on *Disney Wonder*) features a colorful Caribbean flair, while the *Enchanted Garden* (on *Disney Dream* and *Disney Fantasy*) offers a vast menu of international flavors while the venue's décor changes around you.

Deliciously Relaxed

Beach Blanket • Cabanas

Convenient and completely delicious, these great restaurants serve flavorful favorites on a more flexible schedule.



© Copyright Disney. All rights reserved.



Destinations with Imagination

Alaska, Europe, the Caribbean and
more...with so many enchanting destinations
to explore, wonderful things are in store.



©Copyright Disney. All rights reserved.



Destinations with Imagination

THERE'S MAGIC EVERYWHERE WE GO

So which cruise will you choose?

Join in on the magic and luxuriously travel to destinations all over the world. With Disney Cruise Line, you'll find amazing voyages to the Mediterranean, Northern Europe, Alaska, The Bahamas, the Caribbean and more!

With sailings to **Northern Europe**, our Guests are treated to popular Nordic countries including Iceland, Norway, Denmark and more—not to mention stops at scenic fjords, snow-capped mountains and cascading waterfalls.

Set sail to the breathtakingly beautiful and historic **Mediterranean**. Guests have the option to visit romantic cities like Rome, Athens, Florence and Monte Carlo.



Relax on the picturesque white sands of **the Caribbean and The Bahamas**. Select cruises even include a stop at our private island paradise, Disney *Castaway Cay* where you'll find something for everyone—adults can enjoy exclusive locations like Serenity Bay.

Sail through the last frontier and experience all the rugged grandeur of **Alaska**. You'll witness majestic wildlife, historic mining and fishing towns and natural wonders that will leave you breathless.

Experience global destinations like never before with our **Port Adventure** options. There are wild (and tame) excursions for the whole family or adults and teens separately. Discover select Port Adventures before you sail by speaking with your Travel Agent or visiting disneycruise.com. Each Port Adventure comes at an additional charge.

© Copyright Disney. All rights reserved.

*Port Adventures are operated by independent contractors, and *Disney Cruise Line* is not responsible for any injury or property damage/loss that Guests may incur in connection with Port Adventures.



SPACIOUS DISNEY CRUISE SHIP STATEROOMS

Disney Cruise Line staterooms are designed especially for families, with innovations that ensure comfort and relaxation for every Guest. From an imaginative inside retreat to a spacious and abundantly appointed suite, our soothing accommodations allow everyone to travel in grand style.





CONCIERGE ROYAL SUITE WITH VERANDAH (Category R)

One master bedroom with queen-size bed, one wall pull-down double bed, and one wall pull-down single bed in living room, two bathrooms, rain shower, whirlpool tub, living room, dining salon, pantry, wet bar, walk-in closets.

**Sleeps 5 • 1,781 sq. ft.,
including verandah**

CONCIERGE 1- BEDROOM SUITE WITH VERANDAH (Category T)

One bedroom with queen-size bed, living area with double convertible sofa, one wall single pull-down bed in living room, walk-in closets, whirlpool tub, wet bar, two bathrooms with rain shower, private verandah.

**Sleeps 4-5 • 622 sq. ft.,
including verandah**

CONCIERGE FAMILY OCEANVIEW STATEROOM WITH VERANDAH (Category V)

Queen-size bed, double convertible sofa, upper berth pull-down bed, full bath with round tub and shower plus half bath.

**Sleeps 5 • 306 sq. ft.,
including verandah**
© Copyright Disney. All rights reserved.



DELUXE FAMILY OCEANVIEW STATEROOM WITH VERANDAH (Category 4)

Queen-size bed, single convertible sofa, wall pull-down bed (in most) or upper berth pull-down bed (in some), split bath with round tub and shower.

Sleeps 4-5 • 299 sq. ft., including verandah

DELUXE OCEANVIEW STATEROOM WITH VERANDAH (Category 5, 6 & 7)

Queen-size bed, single convertible sofa, upper berth pull-down bed (if sleeping four), split bath with tub and shower.

Sleeps 3-4 • 246 sq. ft., including verandah

DELUXE FAMILY OCEANVIEW STATEROOM (Category 8)

Queen-size bed, single convertible sofa, wall pull-down bed (in most) or upper berth pull-down bed (in some), split bath with round tub and shower (in some).

Sleeps 3-5 • 241 sq. ft.



DELUXE OCEANVIEW STATEROOM (Category 9)

Queen-size bed, single convertible sofa, upper berth pull-down bed (in some), split bath with tub and shower.

Sleeps 3-4 • 204 sq. ft.



DELUXE INSIDE STATEROOM (Category 10)

Queen-size bed, single convertible sofa, upper berth pull-down bed (in some), split bath with tub and shower.

Sleeps 3-4 • 204 sq. ft.



STANDARD INSIDE STATEROOM (Category 11)

Queen-size bed, single convertible sofa, upper berth pull-down bed (in some), bath with tub and shower.

Sleeps 3-4 • 169 sq. ft.



CONCIERGE ROYAL SUITE WITH VERANDAH (Category R)

Two bedrooms (one with queen-size bed; one with two twin beds and two pull-down upper berths), two and a half bathrooms including whirlpool tubs, living room, media library with wall pull-down bed, dining salon, pantry, wet bar and walk-in closets.

**Sleeps 7 • 1,029 sq. ft.,
including verandah**



CONCIERGE 2- BEDROOM SUITE WITH VERANDAH (Category S)

Two bedrooms (one with queen-size bed; one with two twin beds and one pull-down upper berth), whirlpool tub, living area with convertible sofa, walk-in closets, wet bar, DVD player, two and a half bathrooms, private verandah, Concierge service.

**Sleeps 7 • 945 sq. ft.,
including verandah**



CONCIERGE 1- BEDROOM SUITE WITH VERANDAH (Category T)

Queen-size bed, wall pull-down bed (in most), living area with double convertible sofa, walk-in closets, wet bar, DVD player, two bathrooms, private verandah, Concierge service.

**Sleeps 4-5 • 614 sq. ft.,
including verandah**

© Copyright Disney. All rights reserved.



DELUXE FAMILY OCEANVIEW STATEROOM WITH VERANDAH (Category 4)

Queen-size bed, single convertible sofa, pull-down upper berth (in most), privacy divider, split bath, private verandah.

**Sleeps 5 • 304 sq. ft.,
including verandah**

DELUXE OCEANVIEW STATEROOM WITH VERANDAH (Category 5 and 6)

Queen-size bed, single convertible sofa, pull-down upper berth (in some) privacy divider, split bath, private verandah.

**Sleeps 3-4 • 268 sq. ft.,
including verandah**

DELUXE OCEANVIEW STATEROOM WITH NAVIGATOR'S VERANDAH (Category 7)

Queen-size bed, single convertible sofa, privacy divider, split bath, enclosed private verandah with limited views.

**Sleeps 3 • 268 sq. ft.,
including verandah**

© Copyright Disney. All rights reserved.



DELUXE OCEANVIEW STATEROOM (Category 9)

Queen-size bed, single convertible sofa, pull-down upper berth (in some), privacy divider, split bath, window view.

Sleeps 3-4 • 214 sq. ft.



DELUXE INSIDE STATEROOM (Category 10)

Queen-size bed, single convertible sofa, pull-down upper berth (in some), privacy divider, split bath.

Sleeps 4 • 214 sq. ft.

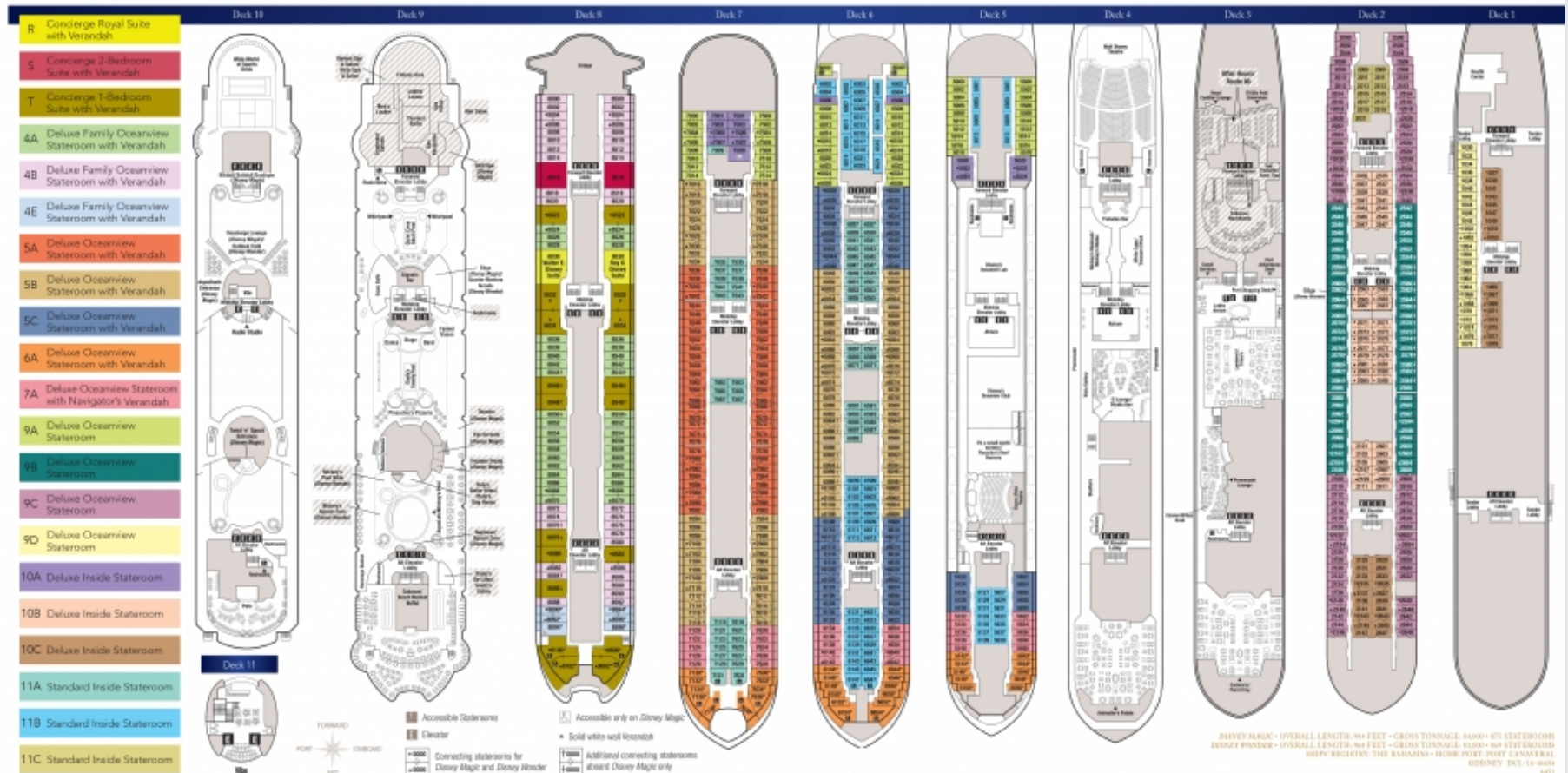


STANDARD INSIDE STATEROOM (Category 11)

Queen-size bed, single convertible sofa, pull-down upper berth (in some), privacy divider, bath.

Sleeps 3-4 • 184 sq. ft.

Disney Magic & Disney Wonder





Disney Castaway Cay, a Private Island Paradise



Disney Castaway Cay

Our very own tropical island paradise—created
just for *Disney Cruise Line* Guests.



YOUR VERY OWN PRIVATE ISLAND!

Welcome to Disney *Castaway Cay*—your very own tropical island paradise, created just for *Disney Cruise Line* Guests. This is the ultimate destination for most Disney cruises to the Caribbean and The Bahamas. Here, the ship docks right at the island to let you come and go as you please throughout the day.

Looking across the turquoise water, you'll spot separate spaces for families, kids and teens. Just offshore is *Pelican Plunge*, a 2,400-squarefoot floating deck of pure watery fun, featuring a twisting corkscrew waterslide and more. Dotted along the curve of the coast—gazing back with a perfect view of the ship—premium, private, rentable family cabanas mark the edge of the white sands of the *Castaway Family Beach*. This is where families come together to relax and where island adventures begin.



YOUR DISNEY CASTAWAY CAY DAY

- Families and adults enjoy beaches created just for them
- Find the underwater Hidden Mickey
- Kids dig for artifacts at Monstro's Point
- Play to win at the game pavilion
- Find the island's wild side at the teen Hideout
- Adults can relax with a Swedish massage on the beach

Disney Castaway Cay, a Private Island Paradise



All across the island, amazing experiences await. Kids gush with splashing water jets at *Spring-A-Leak* and dig up endless fun at *Scuttle's Cove*, where Disney Youth Counselors have paradise planned perfectly. Teens hit the beach for excursions, sports or their own private hangout. And adults set off to an exclusive beach hidden beyond the dunes: *Serenity Bay*—the grown-up side of the island. Complete with massage cabanas, its own beach bar, private cabanas...and, oh yes, a pristine crescent of white sand beach, perfect warm waters, the gentle sounds of the sea and a feeling of pure bliss.



© Copyright Disney. All rights reserved.



Bahamian Voyages

Palm trees are swaying. Waves are lapping.
Island wonders are tempting you to explore.

© Copyright Disney. All rights reserved.



Bahamian Cruises



BAHAMIAN CRUISES DEPARTING FROM PORT CANAVERAL, MIAMI, GALVESTON AND NEW YORK

Our 3- and 4-night delightful escapes to The Bahamas are the perfect way to put your toes in the water if you've never cruised before, or to get an instant tropical recharge with a carefree getaway. 7-night cruises include additional days at sea to relax and enjoy the many things happening on board. You can enjoy all the splendor and magic of The Bahamas with a choice of departures from Florida or Texas.

Plus in fall 2016 you can set sail from the Big Apple on a 7- or 8-night Bahamian Cruise. Adding to the magic will be the opportunity to visit **Walt Disney World®** Resort when the ship stops at nearby Port Canaveral, FL. Each Guest will receive a One-Day Theme Park Ticket with **Park Hopper** Option and round-trip transportation from the port to the resort.

© Copyright Disney. All rights reserved.

DEPARTING FROM MIAMI, FLORIDA

4-NIGHT BAHAMIAN

Disney Magic

2016 Sail Dates | Nov 16

2017 Sail Dates | Jan 11*, 25** • Feb 8**, 22** • Mar 8, 22 • Dec 6*, 20

- Disney *Castaway Cay*
- Nassau, Bahamas
- Day at sea

*Key West, FL Instead of day at sea

**Key West, FL Instead of Nassau, Bahamas

DEPARTING FROM MIAMI, FLORIDA

5-NIGHT BAHAMIAN

Disney Magic

2016 Sail Dates | Dec 18

2017 Sail Dates | Feb 3, 17 • Mar 3, 17, 31 • Dec 15, 29

- Key West, Florida
- Nassau, Bahamas
- Disney *Castaway Cay*
- Day at sea

3-NIGHT BAHAMIAN

Disney Magic

2017 Sail Dates | Jan 5, 8*

- Disney *Castaway Cay*
- Day at sea
- *Nassau, Bahamas instead of day at sea

DEPARTING FROM GALVESTON, TEXAS

7-NIGHT BAHAMIAN

Disney Wonder

2016 Sail Dates | Nov 18, 25 • Dec 9, 23, 30

2017 Sail Dates | Jan 6, 13 • Nov 17, 24 • Dec 8, 15, 22, 29

- Key West, Florida
- Nassau, Bahamas
- Disney *Castaway Cay*
- 3 days at sea



© Copyright Disney. All rights reserved.

DEPARTING FROM PORT CANAVERAL, FLORIDA

3-NIGHT BAHAMIAN

Disney Dream

2016 Sail Dates | Sep 2, 9, 16, 23, 30 • Oct 7, 14, 21, 28 • Nov 4, 11, 18, 25 • Dec 2, 9, 16, 19, 30

2017 Sail Dates | Jan 6, 13, 20, 27 • Feb 3, 10, 17, 24 • Mar 3, 10, 17, 24, 31 • Apr 7, 14, 21, 28 • May 5, 12, 19, 26 • Jul 14, 21, 28 • Aug 4, 11, 18, 25 • Sep 1, 8, 15, 22, 29 • Oct 6, 13, 20, 27 • Nov 3, 10, 17, 24 • Dec 1, 8, 15, 26*

Disney Wonder

2017 Sail Dates | Feb 2*, 9*, 16*, 23 • Mar 2, 9*, 16, 23*, 30 • Apr 6, 13*, 20*

- Nassau, Bahamas
- Disney *Castaway Cay*
- *Day at sea instead of Nassau, Bahamas

DEPARTING FROM PORT CANAVERAL, FLORIDA

4-NIGHT BAHAMIAN

Disney Dream

2016 Sail Dates | Sep 5, 12, 19, 26 • Oct 3, 10, 17, 24, 31 • Nov 7, 14, 21, 28 • Dec 5, 12, 22, 26

2017 Sail Dates | Jan 2, 9, 16, 23, 30 • Feb 6, 13, 20, 27 • Mar 6, 13, 20, 27 • Apr 3, 10, 17, 24 • May 1, 8, 15, 22, 29 • Jun 7*, 21* • Jul 5*, 17, 24, 31 • Aug 7, 14, 21, 28 • Sep 4, 11, 18, 25 • Oct 2, 9, 16, 23, 30 • Nov 6, 20, 27 • Dec 4, 11, 18, 22, 29

*Additional day at Disney *Castaway Cay* instead of day at sea

Disney Wonder

2017 Sail Dates | Jan 29 • Feb 5, 12, 19, 26 • Mar 5, 12, 19, 26 • Apr 2, 9, 16

- Nassau, Bahamas
- Disney *Castaway Cay*
- Day at sea

DEPARTING FROM PORT CANAVERAL, FLORIDA

5-NIGHT BAHAMIAN

Disney Dream

2016 Sail Dates | Jun 2, 11, 16, 25, 30 • Jul 9

- Two stops at Disney *Castaway Cay*
- Nassau, Bahamas
- Day at sea



© Copyright Disney. All rights reserved.

DEPARTING FROM NEW YORK, NEW YORK

7-NIGHT BAHAMIAN

Disney Magic

2016 Sail Dates | Oct 15, 22, 29

2017 Sail Dates | Oct 14, 28 • Nov 4, 11

- Disney *Castaway Cay*
- Port Canaveral, Florida
(*Walt Disney World*® Resort)
- 4 days at sea

8-NIGHT BAHAMIAN

Disney Magic

2016 Sail Dates | Oct 7

2017 Sail Dates | Oct 6 • Nov 18

- Nassau, Bahamas
- Disney *Castaway Cay*
- Port Canaveral, Florida
(*Walt Disney World*® Resort)
- 4 days at sea



© Copyright Disney. All rights reserved.



Caribbean Sailings

From lush mountains to ancient ruins to some of the world's most beautiful beaches—welcome to your Caribbean paradise.

© Copyright Disney. All rights reserved.

DEPARTING FROM PORT CANAVERAL, MIAMI, GALVESTON, SAN JUAN AND NEW YORK

Whichever sailing you choose, you're sure to discover the true meaning of happily ever after. Set sail from your choice of Port Canaveral, Florida (near *Walt Disney World*® Resort); Miami, Florida; Galveston, Texas; New York, New York or even San Juan, Puerto Rico.



© Copyright Disney. All rights reserved.

DEPARTING FROM GALVESTON, TEXAS

4-NIGHT WESTERN CARIBBEAN

Disney Wonder

2016 Sail Dates | Nov 10, 14

- Cozumel, Mexico
- 2 days at sea

7-NIGHT WESTERN CARIBBEAN

Disney Wonder

2016 Sail Dates | Dec 2, 16*

2017 Sail Dates | Nov 10 • Dec 1

- Falmouth, Jamaica
 - Grand Cayman
 - Cozumel, Mexico
 - 3 days at sea
- *Costa Maya, Mexico instead of Falmouth, Jamaica

DEPARTING FROM SAN JUAN, PUERTO RICO

7-NIGHT SOUTHERN CARIBBEAN

Disney Magic

2017 Sail Dates | Apr 9, 16, 23, 30

- St. Lucia
- Barbados
- Martinique
- Antigua
- St. Kitts
- Day at sea



© Copyright Disney. All rights reserved.

DEPARTING FROM PORT CANAVERAL, FLORIDA

7-NIGHT WESTERN CARIBBEAN

Disney Fantasy

2016 Sail Dates |

Sep 3, 17 • Oct 1, 15, 29 • Nov 26 • Dec 10, 24

2017 Sail Dates |

Jan 7*, 21* • Feb 4*, 18* • Mar 4*, 18* • Apr 1*,
15* • May 27 • Jun 10 • Jul 8, 22 • Aug 5, 19 •
Sep 2, 16, 30 • Oct 14, 28 • Nov 25 • Dec 9,
23**

- Cozumel, Mexico
- Grand Cayman
- Falmouth, Jamaica
- Disney *Castaway Cay*
- 2 days at sea

**Includes Star Wars™ Day at Sea*

***Additional stop at Disney Castaway Cay instead of
Falmouth, Jamaica*

DEPARTING FROM PORT CANAVERAL, FLORIDA

7-NIGHT EASTERN CARIBBEAN

Disney Fantasy

2016 Sail Dates |

Sep 10, 24 • Oct 8, 22 • Nov 5, 19 • Dec 3, 17,
31

2017 Sail Dates |

Jan 14*, 28* • Feb 11*, 25* • Mar 11*, 25* • Apr
8*, 22 • May 20 • Jun 3 • Jul 15, 29 • Aug 12 •
Sep 9, 23 • Oct 7, 21 • Nov 4, 18 • Dec 2, 16, 30

- Tortola, British Virgin Islands
- St. Thomas, U.S. Virgin Islands
- Disney *Castaway Cay*
- 2 days at sea

**Includes Star Wars™ Day at Sea*



© Copyright Disney. All rights reserved.

DEPARTING FROM PORT CANAVERAL,
FLORIDA

10-NIGHT SOUTHERN CARIBBEAN

Disney Fantasy

2017 Sail Dates |

Jun 28

- Aruba
 - Curacao
 - St. Kitts
 - Tortola, British Virgin Islands
 - Disney *Castaway Cay*
 - 4 days at sea
-

DEPARTING FROM PORT CANAVERAL,
FLORIDA

11-NIGHT SOUTHERN CARIBBEAN

Disney Fantasy

2017 Sail Dates |

Jun 17

- Aruba
 - Barbados
 - Martinique
 - St. Kitts
 - Tortola, British Virgin Islands
 - Disney *Castaway Cay*
 - 4 days at sea
-



DEPARTING FROM MIAMI, FLORIDA

5-NIGHT WESTERN CARIBBEAN

Disney Magic

2017 Sail Dates | Jan 15, 20*, 29 • Feb 12, 26 • Mar 12, 26 • Dec 10*, 24*

- Grand Cayman
- Disney *Castaway Cay*
- 2 days at sea
- *Cozumel, Mexico instead of Grand Cayman

DEPARTING FROM MIAMI, FLORIDA

7-NIGHT WESTERN CARIBBEAN

Disney Magic

2016 Sail Dates | Nov 20 • Dec 4, 30*

- Key West, Florida
- Grand Cayman
- Cozumel, Mexico
- Disney *Castaway Cay*
- 2 days at sea
- *6-night cruise with no stop in Key West, Florida



7-NIGHT EASTERN CARIBBEAN

Disney Magic

2016 Sail Dates | Nov 27 • Dec 11, 23*

- Tortola, British Virgin Islands
- St. Thomas, U.S. Virgin Islands
- Disney *Castaway Cay*
- 3 days at sea
- *San Juan, Puerto Rico instead of St. Thomas, U.S. Virgin Islands



© Copyright Disney. All rights reserved.

DEPARTING FROM SAN JUAN, PUERTO RICO

6-NIGHT SAN JUAN TO PORT CANAVERAL

Disney Magic

2017 Sail Dates | May 7

- St. Kitts
 - Antigua
 - Tortola, British Virgin Islands
 - Disney *Castaway Cay*
 - Day at sea
 - Port Canaveral, FL
-





European Cruises

Chart a magical course for Europe—filled with so many incredible and iconic destinations.

© Copyright Disney. All rights reserved.

HISTORIC MEDITERRANEAN

Disney Cruise Line returns to the sunny Mediterranean. This is an incredible chance to enjoy so many iconic destinations. Discover the magic of Barcelona, Florence and more. Best of all, every night, your family gets to return "home" to the comfort and magic of your Disney cruise ship- where plenty of enchantment waits.

NORTHERN EUROPE

Charter a magical course for northern Europe. Discover the majestic fjords and scenic mountain ranges of Norway. Explore the rich sights and cultures of the British Isles with stops in England, Scotland and Ireland; plus a visit to France. Also, sail the Baltic waters to explore historical cities including Helsinki, Finland; Stockholm, Sweden and Copenhagen, Denmark.



© Copyright Disney. All rights reserved.



European Cruises

DEPARTING FROM COPENHAGEN,
DENMARK

7-NIGHT NORTHERN EUROPEAN

Disney Magic

2017 Sail Date | May 28 • Jun 11

- Tallin, Estonia
- St. Petersburg, Russia
- Helsinki, Finland
- Stockholm, Sweden
- 2 days at sea

7-NIGHT NORWEGIAN FJORDS

Disney Magic

2017 Sail Date | Jun 4

- Stavanger, Norway
 - Alesund, Norway
 - Geiranger, Norway
 - Bergen, Norway
 - 2 days at sea
-

DEPARTING FROM COPENHAGEN,
DENMARK

10-NIGHT NORTHERN EUROPEAN

Disney Magic

2017 Sail Dates | Jun 18

- Warnemunde, Germany
 - Stockholm, Sweden
 - Helsinki, Finland
 - St. Petersburg, Russia
 - Tallinn, Estonia
 - Amsterdam, Netherlands
 - Dover, England
 - 3 days at sea
-

DEPARTING FROM COPENHAGEN,
DENMARK

12-NIGHT NORWEGIAN FJORDS AND ICELAND

Disney Magic

2016 Sail Dates | Jul 13

- Oslo, Norway
 - Kristiansand, Norway
 - Bergen, Norway
 - Akureyri, Iceland
 - Reykjavik, Iceland
 - Kirkwall, Scotland
 - Invergordon, Scotland
 - Dover, England
 - 3 days at Sea
-



European Cruises

DEPARTING FROM DOVER, ENGLAND

7-NIGHT PORTUGAL AND SPAIN

Disney Magic

2016 Sail Dates | Jul 25

- Vigo, Spain
- Lisbon, Portugal
- Cadiz, Spain
- Barcelona, Spain
- 3 days at sea

12-NIGHT NORWEGIAN FJORDS AND ICELAND

Disney Magic

2016 Sail Dates | Jun 17

- Newcastle, England
- Kirkwall, Scotland
- Reykjavik, Iceland
- Akureyri, Iceland
- Bergen, Norway
- Stavanger, Norway
- Copenhagen, Denmark
- 4 days at sea

DEPARTING FROM DOVER, ENGLAND

12-NIGHT BRITISH ISLES

Disney Magic

2017 Sail Dates | Jul 9

- Newcastle, England
- Invergordon, Scotland
- Kirkwall, Scotland
- Greenock, Scotland
- Liverpool, England
- Dublin, Ireland
- Le Harve, France
- Guernsey
- 3 days at sea

DEPARTING FROM DOVER, ENGLAND

7-NIGHT WESTERN EUROPE

Disney Magic

2017 Sail Dates | Jul 21

- Le Havre (Paris), France
- Lisbon, Portugal
- Cadiz, Spain
- Barcelona, Spain
- 3 days at Sea

11-NIGHT NORWEGIAN FJORDS AND ICELAND

Disney Magic

2017 Sail Dates | Jun 28

- Stavanger, Norway
- Alesund, Norway
- Akureyri, Iceland
- Reykjavik, Iceland
- Invergordon, Scotland
- 4 days at Sea

DEPARTING FROM BARCELONA, SPAIN

10-NIGHT MEDITERRANEAN

Disney Magic

2017 Sail Dates | Jul 28

- Villefranche (Nice), France
- Livorno (Florence, Pisa), Italy
- Olbia (Sardinia), Italy
- Civitavecchia (Rome), Italy
- Naples (Pompeii), Italy
- Palermo (Sicily), Italy
- Palma (Majorca), Spain
- 2 days at Sea

5-NIGHT MEDITERRANEAN

Disney Magic

2017 Sail Dates | Aug 7

- Cannes, France
- Livorno (Florence, Pisa), Italy
- Civitavecchia (Rome), Italy
- Day at sea

DEPARTING FROM BARCELONA, SPAIN

7-NIGHT MEDITERRANEAN

Disney Magic

2016 Sail Dates | Sep 3, 10

2017 Sail Dates | Aug 12, 19, 26 • Sep 2*, 9

- Naples (Pompeii), Italy
- Civitavecchia (Rome), Italy
- Livorno (Florence, Pisa), Italy
- Villefranche (Nice), France
- 2 days at sea
- *Cannes, France instead of Villefranche, France



© Copyright Disney. All rights reserved.



Alaskan Cruises

It's all the natural wonders of fjords, icebergs and glaciers and all the enchantment of Disney.

© Copyright Disney. All rights reserved.

ALASKAN CRUISES

Discover unique Alaskan adventures at each amazing port of call. In Tracy Arm, discover the majesty of twin glaciers—renowned to be among the most striking in the Western world. In Skagway, walk in the footsteps of prospectors from the Klondike Gold Rush. Our stop in Juneau, the state's capital, offers historic sites on land and a chance to go whale watching at sea. Ketchikan will call you to experience the great outdoors with walking tours, kayaking and more.





Alaskan Cruises

DEPARTING FROM VANCOUVER, CANADA

7-NIGHT ALASKAN

Disney Wonder

2017 Sail Dates | May 22, 29 • Jun 5, 12, 19, 26 • Jul 3, 10, 17* • Aug 7, 14, 21, 28 • Sep 4

- Tracy Arm Fjord, Alaska
- Skagway, Alaska
- Juneau, Alaska
- Ketchikan, Alaska
- 2 days at sea

**Additional stop in Icy Strait Point, AK*

DEPARTING FROM VANCOUVER, CANADA

5-NIGHT ALASKAN

Disney Wonder

2017 Sail Dates | Aug 2

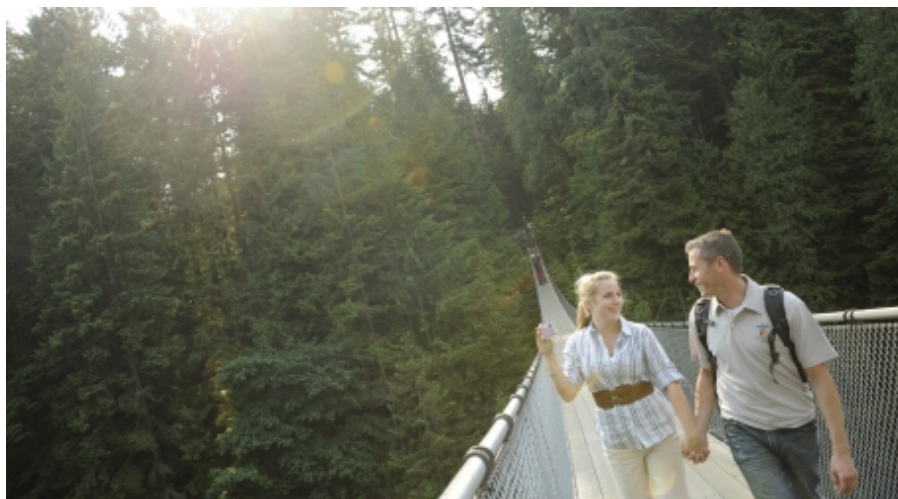
- Tracy Arm Fjord, Alaska
 - Ketchikan, Alaska
 - 2 days at sea
-

9-NIGHT ALASKAN

Disney Wonder

2017 Sail Dates | Jul 24

- Ketchikan, Alaska
 - Icy Strait Point, Alaska
 - Hubbard Glacier, Alaska
 - Juneau, Alaska
 - Skagway, Alaska
 - Tracy Arm Fjord, Alaska
 - 2 days at sea
-



West Coast & Mexican Cruises

Get on board with these magical voyages!

© Copyright Disney. All rights reserved.



WEST COAST & MEXICAN CRUISES

Are you ready for a little West Coast magic? We're proud to announce that we're once again visiting the Golden Coast. Departing from exciting San Diego, California and cruising over to Mexico's beautiful Baja Peninsula—with a stop in fabulous Ensenada, Mexico! Or travel the Pacific coastline between Vancouver and San Diego with stops in amazing San Francisco, California or scenic Victoria, Canada.



© Copyright Disney. All rights reserved.

DEPARTING FROM SAN DIEGO, CALIFORNIA

3-NIGHT BAJA

Disney Wonder

2017 Sail Dates | May 12*, 14 • Sep 15*, 22* • Oct 5, 13*

- Ensenada, Mexico
- Day at sea

**2-night cruise with no day at sea*

4-NIGHT BAJA

Disney Wonder

2017 Sail Dates | Oct 1

- Ensenada, Mexico
- Day at sea

7-NIGHT BAJA

Disney Wonder

2017 Sail Dates | Sep 24 • Oct 15

- Puerto Vallarta, Mexico
- Mazatlan, Mexico
- Cabo San Lucas, Mexico

DEPARTING FROM SAN DIEGO, CALIFORNIA

5-NIGHT BAJA

Disney Wonder

2017 Sail Dates | May 7 • Sep 17 • Oct 8, 22

- Ensenada, Mexico
- Cabo San Lucas, Mexico
- 2 days at sea



© Copyright Disney. All rights reserved.

DEPARTING FROM SAN DIEGO, CALIFORNIA

5-NIGHT CALIFORNIA COAST

Disney Wonder

2017 Sail Dates | May 17

- San Francisco, CA
 - 3 days at sea
 - Vancouver, Canada
-





ALL DECKED OUT

What happens when you combine *Disney Cruise Line* and the joy of the holidays? You get a little something we like to call holiday magic.

This Fall, *Disney Cruise Line* is bringing two enchanting holiday celebrations to multiple sailings across the fleet. Let's just say one's a little scary and the other is very merry!

** Entertainment and activities subject to change without notice.*



Halloween on the High Seas Cruises* - This Halloween, we'll be conjuring up everything from *The Nightmare Before Christmas* Sing & Scream show and trick-or-treating at the atrium party to a villainous nightclub takeover for adults.

Very Merrytime Cruises* - Throughout the holiday season, the entire fleet will be transformed into a holiday wonderland. We'll be decking the halls with festive fun for the whole family! Our winter festivities include a tree-lighting ceremony, a tropical holiday deck party, a visit from Santa Claus and a lavish Winter Wonderland Ball.

** Entertainment and activities subject to change without notice.*

WANT A SPECIAL WAY TO MAKE THE MOST OF YOUR EUROPEAN VOYAGE?

Enhance your Disney European cruise with all-inclusive group-guided port experiences from *Adventures by Disney*®. Your family vacation will be filled with immersive activities, countless VIP privileges and the benefit of two guides taking care of all the details. Focus on what really matters: being together.



WALT DISNEY WORLD® RESORT

Make your magical getaway with *Disney Cruise Line* a dream vacation come true by adding a visit to *Walt Disney World®* Resort. All sailings departing from Port Canaveral, Florida are conveniently located near the most magical place on Earth. By adding a Resort stay or Park tickets, you and your family will find yourselves in the middle of four incredible Theme Parks, two amazing Water Parks and *Disney Springs™* with its eclectic mix of unique boutiques, one-of-a-kind eateries and jaw-dropping entertainment. When you combine these two extraordinary Disney vacations, you'll create one truly unforgettable family vacation.





Here are all the little (and big) details you need to set sail on a magical Disney Cruise Line vacation. After that, we take care of the rest—so all you have to think about is having fun.

PUTTING TOGETHER YOUR CRUISE

If you've never been on a cruise before, you'll want to read this. These little pieces of information should help clear up any questions you have floating around. Or at least let you know where to look for the details you need. Another great place to start is ask your Travel Agent or visit disneycruise.com.



© Copyright Disney. All rights reserved.



DO I NEED TRAVEL INSURANCE?

You never know when something might come up to disrupt your travel plans. The Vacation Protection Plan provides baggage, trip cancellation/interruption and medical expense coverage for your vacation. To learn more about this plan, ask your Travel Agent, visit the Vacation Protection Plan section of this brochure, or visit <http://disneycruise.disney.go.com/cruise-vacation-insurance-plan/> for more details.

EASY PLANNING

Your Travel Agent can make planning easy. They'll help you:

1. Decide when and where you want to sail.
2. Pick a date that's perfect for you.
3. Consider which category of stateroom you'd like.
4. And so much more!

HOW ABOUT A PASSPORT?

We strongly recommend you have one for every member of your sailing party, including children. Traveling with a passport makes your cruise easier by reducing your check-in and disembarkation time. Plus, they are now required to visit many of our destinations. As passport requirements are subject to change, please visit the U.S. Department of State website at <http://travel.state.gov>, or call the U.S. National Passport information center at **877-4USA-PPT** for the most current requirements. International Guests should check with their local government for specific travel document requirements.

WHY USE A TRAVEL AGENT?

They're experts. Working with a Travel Agent saves you time and effort. They're your insider connection. Knowledgeable and informed, they're your professional advocate—able to adapt and customize every aspect of your vacation plans. They're experienced vacation designers who can provide tips and information you may not have considered. They can guide you through travel rules and regulations and are always synched in to keep you up to date on travel alerts and other news.

PUTTING TOGETHER YOUR CRUISE

If you've never been on a cruise before, you'll want to read this. This information should help clear up any questions you have floating around. Or at least they'll let you know where to look for the details you need. Another great place to start is with your Travel Agent.



HOW DO I PLAN PORT ADVENTURES AND ONBOARD FUN?

It's sooo simple. You can maximize your vacation time by booking your cruise activities in advance. To learn more about Port Adventures, onboard programs like youth activities, spa treatments and more, just visit the Planning Center at disneycruise.com or ask your Travel Agent.



CAN WE MAKE THE TRAVEL ANY EASIER?

Sure. We like to make every moment as carefree as we can...and that includes helping with your travel plans, if you like. From air travel and travel insurance to ground transfers and luggage service and more (on certain itineraries, even checking in, and checking your bags for your return flight while you're still on the ship) we can make getting to the ship and back home as hassle free as you want it to be. Just ask your Travel Agent for details or visit disneycruise.com.



Vacation Protection Plan

We want you to have the vacation of your dreams! So we've created a travel protection plan just for you! The *Disney Cruise Line* Vacation Protection Plan includes travel insurance benefits, a 24-hour helpline and a Cancel for Any Reason cruise credit feature. Below is a brief summary of what is included in the plan:

CANCEL FOR ANY REASON – Provided by *Disney Cruise Line*

Receive a future cruise credit up to 75% of the cancellation fee amount to apply toward a future *Disney Cruise Line* sailing **if you need to cancel for any reason** not covered by the insurance portion of the plan. Credits are valid for one year from issue date, are not transferable and have no cash value. Certain restrictions apply.



TRAVEL INSURANCE

Underwritten by Transamerica Casualty Insurance Company

Insurer will reimburse up to the following limits:

- **TRIP CANCELLATION AND TRIP INTERRUPTION**
Up to Total Trip Cost (\$10,000 limit) if you cancel or interrupt due to unforeseen sickness, injury, death and other covered reasons
- **TRIP DELAY**
Up to \$500 if your cruise vacation is delayed due to carrier-caused delays, including inclement weather, unannounced strike and more

- **ACCIDENT/SICKNESS MEDICAL**
Up to \$10,000 covers medical treatment, hospitalization and more if you become sick or injured on your cruise vacation
- **EMERGENCY MEDICAL EVACUATION/REPATRIATION**
Up to \$30,000 to cover emergency medical transport
- **BAGGAGE LOSS**
Up to \$3,000 to cover loss, theft or damage to your bags or personal possessions
- **BAGGAGE DELAY**
Up to \$500 to cover the purchase of necessary items if your bags are delayed for 24+ hours

WORLDWIDE ASSISTANCE SERVICES

Services provided by On Call International

- **24/7 GLOBAL ASSISTANCE**
CareFree Travel Assistance. Medical Assistance. Emergency Services.

© Copyright Disney. All rights reserved.

This plan provides cancellation coverage for your trip and other insurance coverages that apply only during the covered trip. You may have coverage from other sources that provides you with similar benefits but may be subject to different restrictions depending upon your other coverages. You may wish to compare the terms of this policy with your existing life, health, home and automobile policies. If you have any questions about your current coverage, call your insurer, insurance agent or broker.

The plan may be added to your reservation up until final payment has been made to *Disney Cruise Line*. Residents of the state of New York are not required to purchase the *Disney Cruise Line* Vacation Protection Plan in order to access the cancel for any reason credit feature. Please contact 1-866-784-1622 for details.

This optional coverage may duplicate coverage already provided by your personal auto insurance policy, homeowner's insurance policy, personal liability insurance policy or other source of coverage. This insurance is not required in connection with the insured's purchase of travel tickets. Plan

may not be available in all jurisdictions.

Travel insurance is underwritten by Transamerica Casualty Insurance Company, Columbus, Ohio; NAIC # 10952 (all states except as otherwise noted) under Policy/Certificate Form series TAHC5000. In CA, HI, NE, NH, PA, TN and TX Policy/Certificate Form series TAHC5100 and TAHC5200. In IL, IN, KS, LA, OH, OR, VT, WA and WY Policy Form #s TAHC5100IPS and TAHC5200IPS. Certain coverages are under series TAHC6000 and TAHC7000.

This program was designed and is administered by Aon Affinity. Aon Affinity is the brand name for the brokerage and program administration operations of Affinity Insurance Services, Inc. (TX 13695); (AR 244489); in CA & MN, AIS Affinity Insurance Agency, Inc. (CA 0795465); in OK, AIS Affinity Insurance Services, Inc.; in CA, Aon Affinity Insurance Services, Inc. (CA 0G94493), Aon Direct Insurance Administrators and Berkely Insurance Agency and in NY, AIS Affinity Insurance Agency. Affinity Insurance Services is acting as a Managing General Agent as that term is defined in section 626.015(14) of the Florida Insurance Code. As an MGA we are acting on behalf of our carrier partner.

To view full details of the terms, conditions and exclusions of the Vacation Protection Plan, visit disneycruise.com/vacationprotectionplan.



Disney Cruise Line Air Program



DISNEY CRUISE LINE AIR PROGRAM

Leave your worries behind and let us make your travel arrangements for you! *Disney Cruise Line*® offers a convenient air program that includes:

- Economy round-trip air transportation
- Ground transfers to and from the airport
- Luggage transfers on embarkation day for select itineraries
- Onboard airline check-in for participating airlines may be available on select itineraries for Guests on the *Disney Cruise Line* Air Program or Guests who have ground transfers included in their cruise vacation.
- Experience peace of mind knowing that if your flight changes due to certain airline-related delays, we'll take care of the rearrangements.
- Rest assured that changes or cancellations can be made to your air reservation without cancellation fees up to 90 days prior to the start of your vacation, or even as close in as 75 days for select itineraries.
- Enjoy the flexibility of not having to pay for your air arrangements until your final cruise payment due date.

For a hassle-free vacation experience from a city near you, please call 1-800-370-0097 or contact your Travel Agent for pricing and further details.

© Copyright Disney. All rights reserved.

AIR PROGRAM GENERAL INFORMATION

Disney Cruise Line Air Program can be added to your reservation for an additional charge, and is not included in your *Disney Cruise Line* Vacation Package. Air transportation will be arranged in accordance with the scheduled vacation dates.



SPECIAL AIR REQUESTS

For Guests utilizing the *Disney Cruise Line* Air Program, special air requests for upgrades, extended stays and specific airline carriers or flight itineraries will be made subject to availability and confirmation for a nonrefundable, non-commissionable deviation fee per Guest. Additional airline charges may also apply. Requests must be made in writing to *Disney Cruise Line* special air request desk at DCLDeviations@email.disney.com. Guests traveling outside of the *Disney Cruise Line* standard vacation package may forfeit complimentary transfers and/or hotel accommodations, if applicable.

GATEWAY CITIES

Space may be limited for certain gateway cities and availability of any gateway city may be restricted or withdrawn without prior notice. *Disney Cruise Line* reserves the right to designate any air carrier, including commuter and charter services as well as, connections, routing and schedule from each gateway city.

FLIGHT CONFIRMATION AND SEAT ASSIGNMENT

Flight schedules are confirmed by *Disney Cruise Line* as early as 60 days prior to vacation commencement*. Guests are advised to reconfirm flights and times within 48 hours of departure directly with the assigned air carrier. *Disney Cruise Line* is NOT responsible for seat assignments, special meal requests, frequent flyer information or other similar airline-related matters. Guests or Travel Agents must contact the airlines directly to make these airline-related arrangements.

FLIGHT RESTRICTIONS

Disney Cruise Line acts as a sales agent for air carriers. Tickets issued may be highly restrictive or fully nonrefundable and may not be reissued, revalidated or exchanged for another carrier or routing. Any changes, reissues or exchanges must be directed to *Disney Cruise Line* Air/Sea Service Desk and additional penalties and fees may apply.

© Copyright Disney. All rights reserved.

*Air and ground guidelines and policies may vary by itinerary and are subject to change. Please contact your Travel Agent or disneycruise.com for more information



Disney Cruise Line Air Program



FLIGHT SCHEDULE CHANGES, LAYOVERS AND/OR REROUTING

Disney Cruise Line is not responsible for airline schedule changes, cancellations, rerouting or any disruptions of scheduled services once air documents have been issued. However, in the event of certain airline related delays, *Disney Cruise Line* will attempt to reschedule your flights which may include flying you to the next port of call at no additional charge.

OVERNIGHT HOTEL ACCOMMODATIONS

Due to arrival/departure times and availability, it may be necessary for Guests to stay overnight en route to or from their vacation at a location other than their destination. In such an event, *Disney Cruise Line* reserves the right to offer complimentary accommodations at its discretion. Guests will be responsible for their own meals, incidentals and all other expenses.

MISCELLANEOUS

Children under the age of 2 may be able to travel for free, sitting on an adult's lap for flights within North America. International flight rules may vary. Guests have the option to purchase a seat for the infant at the air add-on rate.

We recommend you allow a minimum of four hours* at the beginning and end of your cruise for travel time, customs/immigrations clearances and security checks at the port and the airport.

Guests traveling on separate reservations may be ticketed on a different airline or routing.

© Copyright Disney. All rights reserved.

*Air and ground guidelines and policies may vary by itinerary. Please contact your Travel Agent or disneycruise.com for more information.



Ground Transfers



GROUND TRANSFERS

A worry-free wonder. "Ground Transfer" is just a fancy way to say we'll pick you up and drive you from the airport to either the ship or your hotel, depending on where you're supposed to go. They're available for all our vacation programs.

Riding is easier than looking for a ride.

Transfers get you to and from the airport, your hotel and the ship on comfy, air-conditioned motor coaches.

We'll transfer your luggage on embarkation day.

Onboard airline check-in for participating airlines may be available on select itineraries for Guests on the *Disney Cruise Line* Air Program or Guests who have ground transfers included in their cruise vacation.

Bypass baggage claim (at *Orlando International Airport only*). Our Ground Transfers arrange for your checked and tagged luggage to be picked up and delivered to your *Disney Resort* hotel room or the ship.

To pre-book your transfers or for additional details contact your Travel Agent.

© Copyright Disney. All rights reserved.

GETTING YOUR DUCKS IN A ROW

WE SAY "SAFETY FIRST."

You thought we were going to say magic first, didn't you? Well magic's a close second, but when it comes to cruising, it's safety that makes the magic possible. So, we're happy to take a moment (actually a page) to walk you through some of the steps we take to make the safety magic happen. Here are some simple safety facts to get you started:



SAFETY FACT #1

happens before you ever step foot on the ship. It's security at the port. From terminal security checks to our crew's ongoing safety drills and onboard security personnel, we're constantly vigilant so you can relax.

SAFETY FACT #2

happens right before we sail. It's called Mustering. That's a classic sailing term for when we show you how to don a life jacket, how to get to your muster station location and where the lifeboats are in case of an emergency.

SAFETY FACT #3

is all in the way the ship is built: intelligently. The railings, which look so nice, are also surprisingly practical. Designed with safety in mind, railings on all decks and stateroom verandahs are covered with plexiglass on the interior side. Their heights have been engineered to keep you safely on board.

SAFETY REMINDER:

Although we try to think of everything, please remember that the common sense rules of safety that apply on any trip also apply when you are cruising. Safety is a shared responsibility.



Terms and Conditions

TERMS AND CONDITIONS

CRUISE CONTRACT Your ticket is the Cruise Contract (available at www.disneycruise.com/cruisecontract). The forms needed for your vacation can be completed online by registering and logging into disneycruise.com and selecting "My Disney Cruise" or you will receive this package within 28 days of sailing. Carefully read your Cruise Contract, as it contains important terms and conditions which govern your cruise vacation and affect your legal rights. It must be signed by all Guests prior to embarking any **Disney Cruise Line** ship. In the event of conflict between the terms and conditions contained in the Cruise Contract, these Terms and Conditions, the terms of any **Disney Cruise Line** advertisement or offer, and the oral or written representations of any **Disney Cruise Line** representative, the terms and conditions contained in the Cruise Contract shall control.

MINORS

Minors under the age of 18 not traveling with a parent or legal guardian must be accompanied by an adult 21 years of age or older in the same stateroom. The parent or guardian of any minor not traveling with a parent or guardian must appoint an adult to have custody and control over the minor and to contract on their behalf in connection with the **Disney Cruise Line** vacation. A minor authorization form can be obtained by visiting disneycruise.com and selecting "My Disney Cruise" or is sent when a document package is mailed. The form must be signed by a parent or legal guardian prior to embarkation at the **Disney Cruise Line** Terminal. After 9:00 PM, adult entertainment districts are restricted to Guests 18 years and older.

BAGGAGE, VALUABLES AND OTHER POSSESSIONS

Each Guest may bring aboard the ship a reasonable amount of clothing and personal effects without charge, not to exceed 2 bags per person. All Guest baggage must be stored in the Guest's stateroom and must be labeled with the **Disney Cruise Line** baggage tag. Dangerous or illegal articles such as weapons, explosives, liquid oxygen, combustible substances or nonprescription controlled substances may not be brought to the **Walt Disney World®** Resort or taken aboard the ship.

Any such items shall be surrendered to the Master of the ship at embarkation, and may be disposed of at the sole discretion of the Master. You should retain valuables such as cash, negotiable securities or other financial instruments, gold, silverware, jewelry, ornaments, works of art, photographic/video/audio equipment or supplies, laptop computers, cellular phones or other valuables in your personal control as **Disney Cruise Line** is not responsible for damage to or loss of these items.

ALCOHOL POLICY

Effective for cruises embarking on or after September 30, 2015, each Guest 21 years and older may bring two bottles of unopened wine or champagne (no larger than 750ml) or six beers (no larger than 12oz) on board in carry-on luggage at the beginning of the voyage and at each port-of-call. All wine/champagne and beer brought on board must be packed in the Guest's carry-on luggage. Any alcohol packed in checked luggage will be removed and stored until the completion of the cruise. Guests are not allowed to bring liquors and spirits (including powdered alcohol) on board.

DEPOSIT/PAYMENT INFORMATION

A deposit is required to confirm a reservation. Deposit amount will be determined at time of booking. Vacation and cruise packages are subject to cancellation if full deposit is not received in our office within the option period specified at time of booking. For reservations confirmed in U.S. dollars, final payment in the form of a check or credit card (Visa®, MasterCard®, American Express®, Discover® Card, Diners Club®, Japanese Credit Bureau or Disney Reward® Visa® Credit Card) must be received on the date determined at the time of booking. For reservations not confirmed in U.S. Dollars, acceptable forms of payment are Visa® and MasterCard®. Payment policy for group travel may vary. Please contact your Travel Agent for complete details.

Failure to strictly comply with the deposit and final payment schedules, or any other applicable policies and procedures, will result in the automatic cancellation of pending reservations.

© Copyright Disney. All rights reserved.



Terms and Conditions

For payments by mail, send to:

Disney Cruise Line

PO Box 277763

Atlanta, GA 30384-7763

For payments by services such as Federal Express®, Airborne®, or UPS®, send to:

Disney Cruise Line

Bank of America Lockbox Services

Lockbox 277763

6000 Feldwood Road

College Park, GA 30349

407-566-3500

CANCELLATIONS/REFUNDS

Cancellations may be made by telephone or in writing. Changes to the vacation commencement date or changes of Guest names will be considered cancellations. For cancellations, amounts paid, minus cancellation fees and other amounts owed, will be promptly refunded. No refunds will be made in the event of interruption or cancellation by the Guest after vacation commencement date.

All appropriate refunds will be made directly to the Guest's credit card account or through the Guest's Travel Agent if the reservation is made through a Travel Agent. **Disney Cruise Line** is not responsible for the receipt of refund monies by Guests from their Travel Agents. All travel documents including airline tickets must be returned before refund processing can begin. Certain Travel Agents may withhold an agency cancellation fee. **Disney Cruise Line** reserves the right to restrict any changes to a reservation. All changes are subject to availability.

Please note that changes made to overall party size may result in a change to the rate. For your peace of mind, we recommend the purchase of the **Disney Cruise Line** Vacation Protection Plan, which is administered by Aon Affinity and underwritten by Transamerica Casualty Insurance Company (www.disneycruise.com/VacationProtectionPlan).

Premiums for the *Disney Cruise Line* Vacation Protection Plan must be paid by the final payment date, and the *Disney Cruise Line* Vacation Protection Plan is not effective until final vacation payment is made.

CRUISE CANCELLATION FEES

CATEGORIES WITH RESTRICTIONS: Reservations for Inside, Outside or Verandah Categories with Restrictions are NONREFUNDABLE and NONTRANSFERABLE. A 100% cruise cancellation fee applies from time of payment.

Cruises 1 to 5 Nights Where Embark or Debark is U.S. Port (Excluding Suites and Concierge Staterooms)

DAYS PRIOR TO VACATION COMMENCEMENT DATE	HOLIDAY SAILINGS*	FEE AMOUNT
74-45 days	89-65 days	Deposit per Guest
44-30 days	64-43 days	50% of vacation price per Guest
29-15 days	42-15 days	75% of vacation price per Guest
14 days or less	14 days or less	100% of vacation price per Guest

*Holiday Sailings are sailings that include Christmas Day, New Year's Day, Thanksgiving Day (U.S.) or July 4.

© Copyright Disney. All rights reserved.



Terms and Conditions

Cruises 6 to 9 Nights Where Embark or Debark is U.S. Port (Excluding Suites and Concierge Staterooms)

DAYS PRIOR TO VACATION COMMENCEMENT DATE	HOLIDAY SAILINGS*	FEE AMOUNT
89-56 days	104-75 days	Deposit per Guest
55-30 days	74-43 days	50% of vacation price per Guest
29-15 days	42-15 days	75% of vacation price per Guest
14 days or less	14 days or less	100% of vacation price per Guest

*Holiday Sailings are sailings that include Christmas Day, New Year's Day, Thanksgiving Day (U.S.) or July 4.

Cruises of 10 Nights or More and Cruises Less Than 10 Nights Where Embark and Debark is Non-U.S. Port (Excluding Suites and Concierge Staterooms)

DAYS PRIOR TO VACATION COMMENCEMENT DATE	FEE AMOUNT
119-56 days	Deposit per Guest
55-30 days	50% of vacation price per Guest
29-15 days	75% of vacation price per Guest
14 days or less	100% of vacation price per Guest



Terms and Conditions

Suites and Concierge Staterooms: All Sailings

DAYS PRIOR TO VACATION COMMENCEMENT DATE	FEE AMOUNT
90 days or more	Deposit per Guest
89-56 days	50% of vacation price per Guest
55-30 days	75% of vacation price per Guest
29 days or less	100% of vacation price per Guest

AIR CANCELLATION FEES:

Any changes or cancellations to your Disney Cruise Line air arrangements (including, but not limited to, sail date/air travel date changes and name changes/corrections) will result in cancellation fees assessed as follows:

All Flights Within North America (Including Canada)

DAYS PRIOR TO VACATION COMMENCEMENT DATE	FEE AMOUNT
74 to 45 days	10% of the air supplement per Guest
44 to 31 days	50% of the air supplement per Guest
30 to 0 days	100% of the air supplement per Guest



Terms and Conditions

Any Flights Outside North America

DAYS PRIOR TO VACATION COMMENCEMENT DATE	FEE AMOUNT
89 to 45 days	50% of the air supplement per Guest
44 to 0 days	100% of the air supplement per Guest

If at least one flight departs/arrives at an airport outside North America, the entire flight itinerary will follow the "Any Flights Outside North America" policy.

HOTEL CANCELLATION FEES

A cancellation fee in the amount of the total hotel cost for all nights reserved will be assessed if: a) a hotel reservation outside of Orlando is cancelled 14 days or less prior to arrival date; or, b) a hotel reservation in Orlando or at Aulani, a Disney Resort & Spa is cancelled 4 days or less prior to arrival date.

GROUND TRANSFER CANCELLATION FEES

A cancellation fee in the amount of the total cost of Ground Transfers will be assessed if Ground Transfers are cancelled 7 days or less prior to arrival date.

SERVICE FEES

Changes to a reservation may result in a per Guest service fee. Please consult your Travel Agent or Disney Cruise Line for further details.



Terms and Conditions

CLAIMS/NOTICE REQUIREMENTS/TIME LIMITS

No claim for delay, detention, personal injury, illness, emotional distress or death of a Guest, or for loss of or damage to any property of a Guest, may be brought against **Disney Cruise Line** unless written notice of such claim is provided to **Disney Cruise Line** within 6 months after the date of the event upon which such claim is based (within 30 days after the termination of the cruise for a claim of property loss or damage); and no legal action may be brought against **Disney Cruise Line** for delay, detention, personal injury, illness, emotional distress or death of a Guest, or for loss of or damage to any property of a Guest, unless such legal action shall be commenced within one (1) year after the date of the event upon which such claim is based (within one (1) year after the termination of the cruise for a claim for property loss or damage), and legal process relating to such action is served on **Disney Cruise Line** within 120 days after filing, notwithstanding any provision of law of any state, territory, possession or country to the contrary. All legal actions arising out of or relating to a **Disney Cruise Line** vacation shall be brought, if at all, and maintained exclusively in and before any court of competent jurisdiction located in Brevard County, Florida, U.S.A., or the United States District Court, Middle District of Florida, Orlando Division, to the exclusion of courts located in any other county, state, country, territory or possession whatsoever. The only exception to this choice of forum is when and if **Disney Cruise Line** asserts a petition for exoneration from or limitation of liability. **Disney Cruise Line** liability for loss of or damage to property of any Guest is limited to the amount of \$300 per Guest per voyage, unless upon embarkation a Guest declares the true value of the property in writing and pays 5% of the true value declared in excess of \$300 to **Disney Cruise Line**, in which case **Disney Cruise Line** liability will be limited to the true value declared not to exceed \$5,000. All settlements will be made based on actual cash value (replacement cost, less depreciation) up to the U.S. \$300/\$5,000 limits to **Disney Cruise Line** liability. Losses due to ordinary wear and tear, perils of the sea and acts of God are not reimbursable. **Disney Cruise Line** provides an in-room safe for your convenience; however, **Disney Cruise Line** shall in no event be liable for the loss of or damage to cash, negotiable securities, gold, silverware, jewelry, ornaments, works of art, photographic/video/audio equipment or supplies, laptop computers, cellular phones or other valuables unless the same have been deposited with the Master or other designated representative who issued a written receipt therefor. In the event of such deposit, **Disney Cruise Line** liability for loss or damage thereof shall be limited as otherwise provided in this paragraph. Additional coverage may be purchased through the **Disney Cruise Line** Vacation Protection Plan which is administered by Aon Affinity and underwritten by Transamerica Casualty Insurance Company (www.disneycruise.com/VacationProtectionPlan).

WALT DISNEY WORLD RESORT CHECK-IN; SHIP EMBARKATION

Check-in time for **Walt Disney World**® Resort hotels is normally after 4:00 PM. For Guests arriving early, luggage arrangements can be made so Guests can visit Theme Parks or enjoy Resort amenities. It is recommended that necessary items including proof of citizenship, valuables, medications (in their original containers) and any other personal items or other items required for check-in or embarkation be packed in your day bag. **Walt Disney World** Resort check-out time is normally before 11:00 AM. Ship's embarkation begins at 1:00 PM. Guests are required to be on board the ship at least one hour before scheduled sailing time.

INCLUDED IN VACATION FARE

Cruise vacation fares include shipboard accommodations on a per-Guest basis, and all meals and entertainment as provided on board the ship. For parties staying at a **Walt Disney World** Resort hotel and reserving a shipboard suite for more than 5 Guests, an additional **Walt Disney World** Resort hotel room will be required at additional cost.



Terms and Conditions

EXCLUDED FROM VACATION FARE

The Resort portion of the fare does not include meals, beverages or any other item of a personal nature. The cruise portion of the fare does not include airfare, ground or baggage transfers, fuel supplements, shore excursions, sightseeing or meals ashore in the ports of call, gratuities, alcoholic beverages, soft drinks, bottled water, laundry or valet services, or any other items not specifically included. The fare also does not include *Taxes, Fees and Port Expenses*, as that term is defined at www.disneycruise.com/taxesandfees.

CRUISE HEALTH CONSIDERATIONS

By boarding the **Disney Cruise Line** cruise ship, Guests represent themselves as physically and otherwise fit to travel. If you have a medical condition which requires you to take prescription medication or may require you to obtain medical care during the course of your cruise vacation, please consult with your personal physician prior to traveling. For your convenience, a physician and nurse are on call 24 hours a day to provide basic medical services. The physician and nurse are not employees or representatives of **Disney Cruise Line** and will charge their prevailing fees for services provided at your request. Decisions regarding medical care and treatment are personal and confidential and as such are strictly between the Guest and physician and nurse. **Disney Cruise Line** is not liable for any death, personal injury, illness or emotional distress caused by reason of any treatment, diagnosis, advice, examination, prescription or other service provided by such medical personnel or by the failure of such medical personnel to provide any treatment, diagnosis, advice, examination, prescription or other service. The ship's Master has the right at any time to require any Guest to disembark for medical reasons, and compliance is mandatory. For your peace of mind, we recommend the purchase of the **Disney Cruise Line** Vacation Protection Plan. **Premiums for the Disney Cruise Line Vacation Protection Plan must be paid by the final payment due date, and the Disney Cruise Line Vacation Protection Plan is not effective until final payment is made.**

HOLIDAY SHOPPING

Retail establishments in destination ports may be closed for certain holidays.

RIGHT TO CHANGE ITINERARY/DETENTION

Disney Cruise Line may in its sole discretion and without prior notice change, substitute, postpone, cancel or deviate from any scheduled sailing, itinerary or call at any port, and may substitute another vessel for the ship, and shall not be liable for any loss or damage incurred by a Guest as a result of any such change, substitution, postponement, cancellation or deviation. The Guest shall pay any and all expenses incurred if a Guest is detained on board ship or elsewhere at any stage of a voyage because of quarantine, port regulations, prevailing applicable law, illness or other cause.

GROUP TRAVEL

Policies for group travel may vary. Please contact your Travel Agent for specifics.

PETS/SERVICE ANIMALS

No animals are allowed on board the ships except for service animals. **Disney Cruise Line** must be notified at least 72 hours prior to sailing if a service animal is to be brought on board the ship. Many ports of call have strict entry requirements for animals, and you must ensure that your service animal complies with all requirements of each destination. **Disney Cruise Line** is not responsible for your inability to visit a port of call due to your failure to comply with any such entry requirements.



Terms and Conditions

REFUSAL OF PASSAGE

Disney Cruise Line may refuse to transport or may disembark at any port any Guest who may be suffering from a contagious or infectious disease, ill health or whose presence in the opinion of the Master may be detrimental to the comfort or safety of other Guests or the crew, or who, in the Master's opinion, might be excluded from landing at destination by Immigration or other governmental authorities. In such cases, the Guest shall not be entitled to any refund of fare or compensation whatsoever. **Disney Cruise Line** reserves the right to refuse passage to Guests with criminal backgrounds. **Women who have entered their 24th week of pregnancy as of their embarkation date or who will enter their 24th week of pregnancy during the cruise will be refused passage due to safety concerns. Neither a physician's medical statement nor a waiver of liability will be accepted. In addition, Disney Cruise Line cannot be held responsible or liable for any complications relating to pregnancy at any stage. The minimum age to sail aboard Disney Cruise Line ships is 6 months of age, except the minimum age for Transatlantic, Hawaii and Panama Canal itineraries is 1 year of age.**

NO SOLICITATION

No solicitation of goods and services of any kind is allowed on any **Disney Cruise Line** ships.

STATEROOM OCCUPANCY

Occupancy of stateroom on board the ships is limited to the number of berths in that stateroom. **Disney Cruise Line** reserves the right to limit the number of berths and single staterooms sold.

SHIPS' REGISTRY

Ships' Registry: The Bahamas

TRANSFER INFORMATION

For Guests who purchase the **Disney Cruise Line** Air Program, ground and baggage transfers are included in your vacation package to and from the port of embarkation and the airport closest to the port of embarkation. Guests who make their own air arrangements may purchase ground and baggage transfers from **Disney Cruise Line**, which transfers include transportation between the port of embarkation and the airport closest to the port of embarkation. Please note that those Guests who do not purchase the **Disney Cruise Line** Air Program or ground transfers from **Disney Cruise Line** are responsible for all ground and baggage transportation to and from the airport, the port of embarkation and their hotel, if applicable. We recommend that you allow a minimum of 4 hours at the beginning and end of your cruise for travel time, customs clearances and security checks at the port of embarkation and the airport.

TRAVEL AGENTS

We invite you to visit your local Travel Agent to make your **Disney Cruise Line** reservation. Travel agencies are not owned or operated by **Disney Cruise Line** and act on the Guest's behalf in arranging vacations.

TERMS SUBJECT TO CHANGE

Disney Cruise Line reserves the right to change all prices and other terms and conditions which appear in this website/brochure without prior notice. Price changes will not affect bookings with timely final payment, except where the increase results from increases in Taxes, Fees and Port Expenses, as applicable.

© Copyright Disney. All rights reserved.



Terms and Conditions

SINGLE-OCCUPANCY RATES

Single-occupancy fares are 200% of the double-occupancy package price.

SMOKING/NONSMOKING POLICY

For the comfort and enjoyment of our Guests, **Disney Cruise Line** ships have been primarily designated as non-smoking ships. However, it is recognized that some Guests smoke. To provide an onboard atmosphere that also satisfies smokers, portions of open-air decks on each ship are designated as smoking areas. Smoking is prohibited in Guest staterooms and private verandahs. Guests who are found smoking in their staterooms or on their verandahs will be charged \$250, which will be added their folio. All Guests must observe the nonsmoking areas and refrain from smoking pipes and/or cigars in any of the public areas. These requests are to provide a comfortable shipboard living atmosphere for everyone.

VACATION PROVIDERS

Magical Cruise Company, Limited (doing business as **Disney Cruise Line** - Registered Office: 3 Queen Caroline Street, Hammersmith, London, W6 9PE, England) and DCL Island Development, Ltd. are each separate entities and are indirect subsidiaries of **The Walt Disney Company**. Magical Cruise Company, Limited is the operator of the **Disney Cruise Line** cruise ships. DCL Island Development, Ltd. is the operator and provider of facilities on Disney **Castaway Cay**. All arrangements made for or by Guests for: (a) air or ground transportation or travel; (b) shore excursions; (c) tours; (d) theme parks; (e) hotels; (f) restaurants; or (g) other similar activities or services, are made solely for Guests' convenience and are at Guests' risk. The providers of such activities and services are independent contractors and are not acting as agents or representatives of Magical Cruise Company, Limited. The identity of the providers of such activities and services is available upon request from the shore excursion manager. Magical Cruise Company, Limited shall not be liable or responsible in any way for any death, personal injury, illness or emotional distress occasioned by any Guest, or for loss of or damage to any Guest's property, which arises by reason of any act or omission by providers of air or ground transportation, shore excursions, tours, restaurants, hotels, theme parks or other similar services or activities. The liability of the provider of such accommodations, services and activities may be governed by and determined in accordance with limitations contained in applicable tariffs, laws, conventions or contracts governing a Guest's relationship with such provider. All concessionaires and their employees operating on the **Disney Cruise Line** cruise ships, including without limitation the fitness center, spa, hair salon, laundry, Internet cafe and photo shop are independent contractors and Magical Cruise Company, Limited is not responsible for any such parties' acts or omissions in providing any goods or services to Guests.

PERISHABLES

Coolers are not permitted except if needed for medications, baby food or items related to dietary constraints. Coolers containing personal items (e.g., soda or snacks) may NOT be brought on board. Homemade, pre-cooked or other perishable items plus any open snack containers will not be allowed to be brought on board. We regret that we are unable to provide food preparation, refrigeration or storage on board for personal food or beverage items.

INFANT POOL POLICY

For the health and safety of our Guests, parents must observe U.S. Public Health Service requirements by allowing only children who are toilet trained to enter shipboard pools and spas. Diapers and swim diapers are not allowed. However, young children who are not toilet trained are welcome to enjoy the fountain play area near the **Mickey's Pool** that has been designed exclusively for the enjoyment of children wearing swim diapers.

© Copyright Disney. All rights reserved.



Terms and Conditions

PASSPORTS/VISAS

Guests are responsible for obtaining proper documentation to board the ship. U.S. government regulations related to passport requirements are subject to change. Therefore, we strongly encourage Guests of all ages to have a valid U.S. passport for all cruises. Please visit the U.S. Department of State website at <http://travel.state.gov> or call the U.S. National Passport Information Center at 877-4USA-PPT for the most current requirements. It is mandatory for anyone travelling to or transferring through the U.S. under the Visa Waiver Program, to obtain approval to travel no later than 72 hours prior to travel by completing the online Electronic System for Travel Authorization (ESTA) process. The cost of ESTA is currently \$14 per person (subject to change). Additional information can be obtained by visiting <https://esta.cbp.dhs.gov>.

GUESTS WITH DISABILITIES/WHEELCHAIR-ACCESSIBLE STATEROOMS

Disney Cruise Line offers accessible staterooms and suites, equipped for Guests with disabilities. Features include: ramped bathroom thresholds, open bed frames, added phones in the bathroom/nightstand, bathroom and shower handrails, fold-down shower seats, handheld shower heads, and lowered towel and closet bars. Note: Guests requiring a wheelchair throughout their cruise must make provisions for the use of that wheelchair prior to the cruise.

GUESTS WITH DISABILITIES/ADDITIONAL SERVICES

Transfer tiers are provided at one of our feature pools. Sand wheelchairs are available at **Castaway Cay**. Wheelchair-accessible restrooms are available in the shipboard common areas. Assistive Listening Systems are available in the main theaters. Closed captioning is available for stateroom televisions and select onboard video monitors. Sign language interpretation is available for live performances on designated cruise dates. Stateroom Communication Kits containing door knock and phone alerts, phone amplifier, bed shaker notification, a strobe light smoke detector, and a Text Typewriter (TTY) are available.

GUESTS WITH DISABILITIES ACCOMMODATIONS

If you would like to receive additional information or request accommodations for Guests with disabilities, please discuss your needs with the reservationist at the time of booking. For information via TTY, please call (407) 566-7455.



Terms and Conditions

GUESTS WITH DISABILITIES/CRUISES EMBARKING IN EUROPEAN UNION PORTS

EU Regulation 1177/2010 applies where the Guest embarks the ship in a European Union port. At the time of booking, Guests must notify **Disney Cruise Line** in writing if they are a "Disabled Person" or "Person with Reduced Mobility" that may require special arrangements, medical equipment and/or supplies, or care or assistance at the terminal of embarkation or disembarkation, during embarkation or disembarkation or during the cruise; of any specific needs with regard to accommodation, seating or services required; and, whether they need to bring any specific medical equipment or assistance animals on board. If a Guest's circumstances change between the date of booking and the cruise, the Guest must inform **Disney Cruise Line** as soon as possible and advise of the need of any special arrangements including medical equipment. **Disney Cruise Line** will refuse boarding to Guests who cannot be carried safely and in accordance with all applicable safety requirements established by International, European Union or National Law or where embarkation, disembarkation and/or carriage of the Guest cannot be carried out in a safe manner. **Disney Cruise Line** can refuse to accept a booking or subsequently embark any Guest on the grounds of safety, taking into account among other things the ISM Code for the Safe Operation of Ships and/or SOLAS relating to the Safety of Life at Sea. It is important that the fullest information is provided at the time of booking. "Disabled Person" or "Person with Reduced Mobility" under this Regulation means any person whose mobility when using transport is reduced as a result of any physical disability (sensory or locomotor, permanent or temporary), intellectual or psychosocial disability or impairment, or any other cause of disability or impairment or as a result of age, and whose situation needs appropriate attention and adaptation to his/her particular needs for the services made available to all passengers.

Where necessary in order to comply with applicable safety requirements, **Disney Cruise Line** may require a Disabled Person or Person with Reduced Mobility to be accompanied by another person who is fit and able to assist them in day to day activities. This requirement may vary from ship to ship and itinerary to itinerary. Guests who may fall into this category may include those who require assistance with personal care including feeding. All personal care or supervision must be arranged by you at your expense. **Disney Cruise Line** is unable to provide respite care, one-to-one personal care or supervision or any other form of specialized care for Guests.

You must inform **Disney Cruise Line** prior to sailing of any medical equipment which you wish to bring on board so that **Disney Cruise Line** can determine if the equipment can be carried safely on board. The ship cannot carry liquid oxygen or refill or supply oxygen cylinders. Failure to notify **Disney Cruise Line** of such equipment may result in that equipment not being allowed on board the ship and consequently may affect your ability to participate in the cruise. No more than 2 pieces of such medical equipment are allowed per stateroom and the value of such equipment must not exceed \$4,000 per stateroom in total, unless agreed otherwise in writing by **Disney Cruise Line**. In the event that any such equipment is lost or damaged by the negligence of **Disney Cruise Line** and/or its servants or agents, then **Disney Cruise Line** will replace or repair such equipment at its option.

GOVERNING LAW

Disney Cruise Line vacation reservations are deemed to be contracts made in the state of Florida and are governed by Florida law and, to the extent applicable, United States maritime law, to the exclusion of all choice-of-law rules which might otherwise apply. Any legal action relating to a **Disney Cruise Line** vacation reservation shall be brought and maintained exclusively before any court located in Brevard County, Florida, or the United States District Court for the Middle District of Florida (Orlando Division).